

EQUIP. TYPE R390A/JRR EXP. NO.

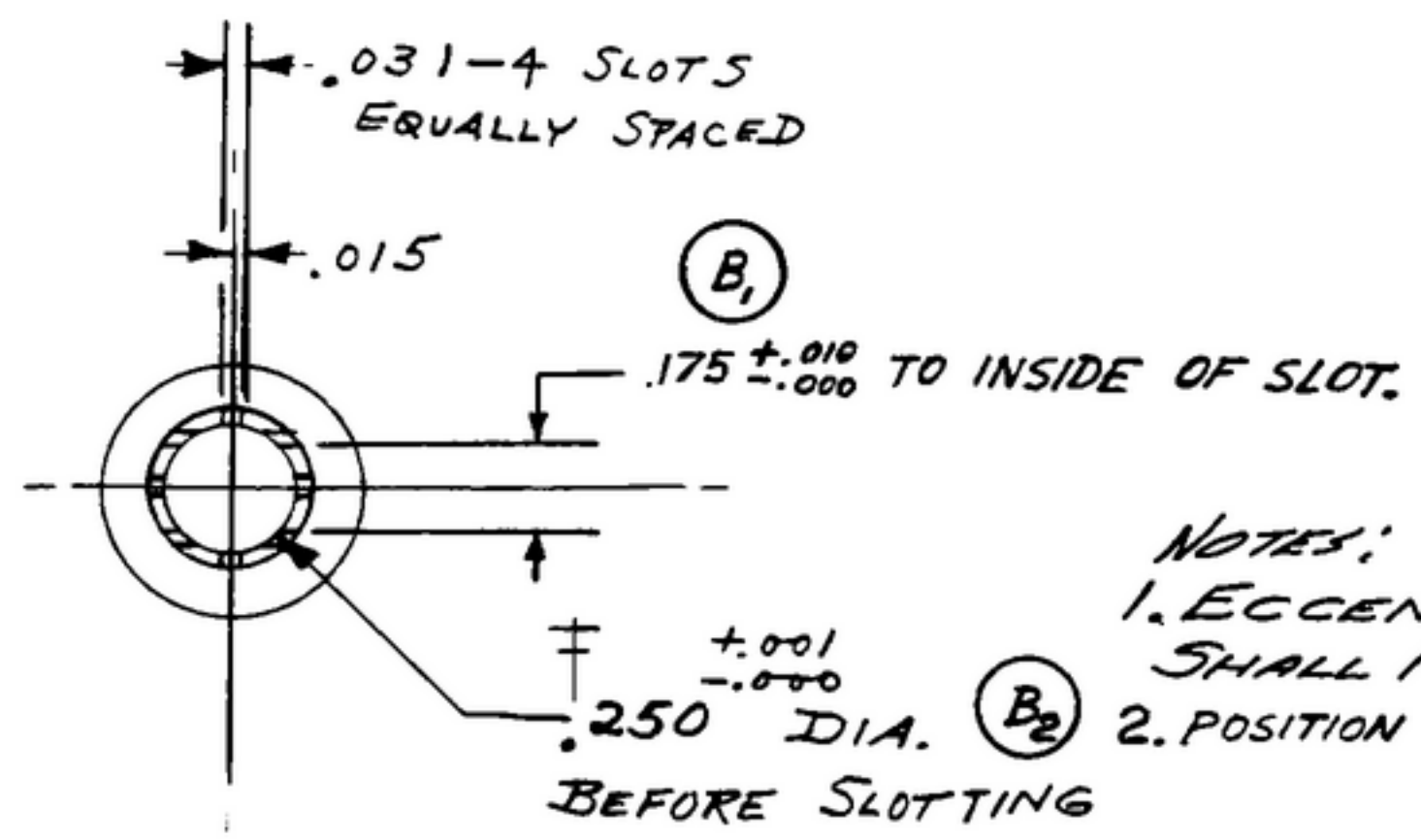
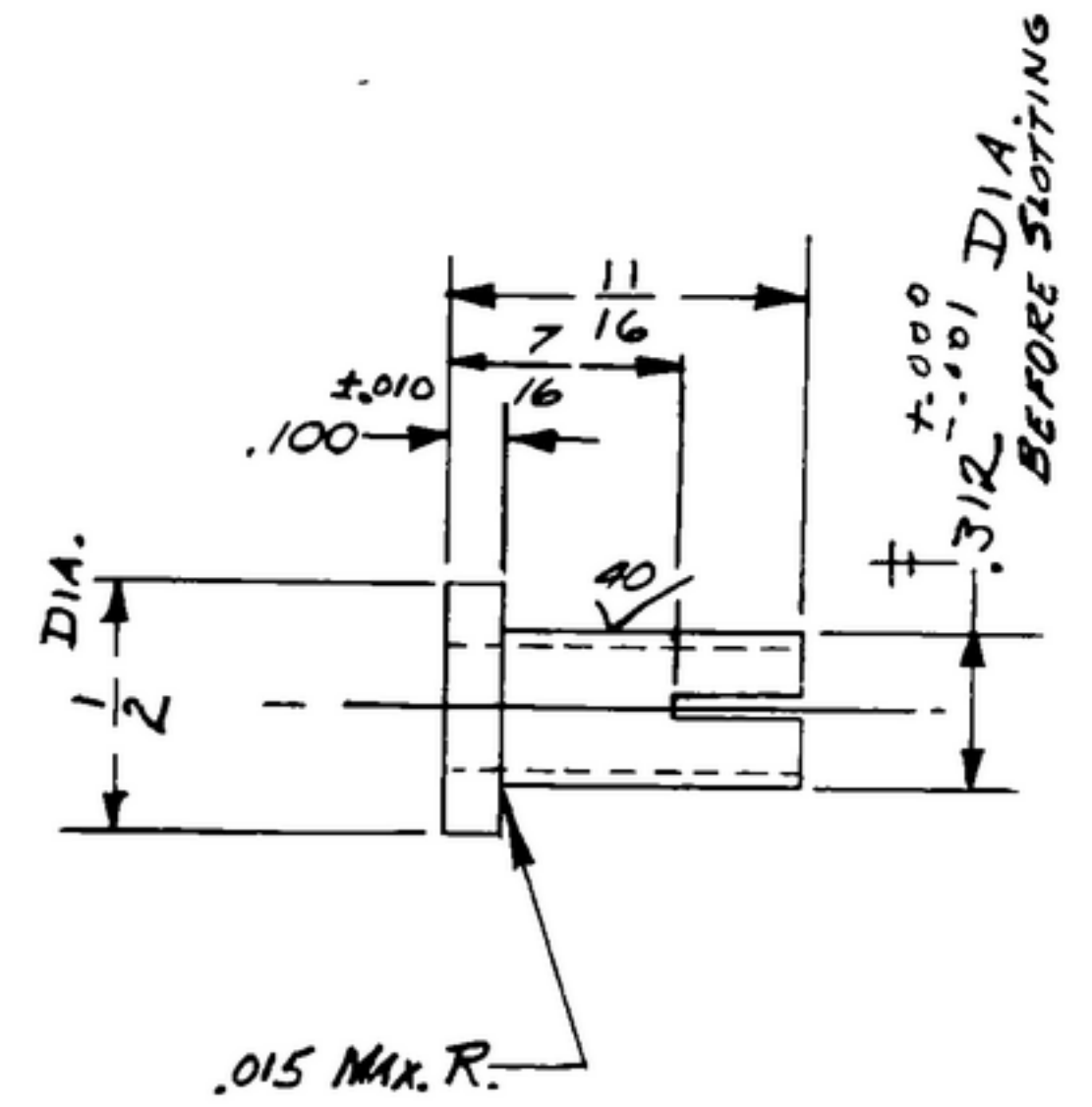
COL. 540 7456 002

NOTICE: WHEN GOVERNMENT DRAWINGS, SPECIFICATIONS, OR OTHER DATA ARE USED FOR ANY PURPOSE OTHER THAN IN CONNECTION WITH A DEFINITELY RELATED GOVERNMENT PROCUREMENT OPERATION, THE UNITED STATES GOVERNMENT THEREBY INCURS NO RESPONSIBILITY AND NO OBLIGATION WHATSOEVER AND THE FACT THAT THE GOVERNMENT MAY HAVE FORMULATED, FURNISHED, OR IN ANY WAY SUPPLIED THE SAID DRAWINGS, SPECIFICATIONS, OR OTHER DATA IS NOT TO BE REGARDED AS IMPLICATION OR OTHERWISE AS IN ANY MANNER LICENSING THE HOLDER OR ANY OTHER PERSON OR CORPORATION, OR CONFERRING ANY RIGHTS OR PERMISSIONS TO REPRODUCE, USE, OR SELL ANY PATENTED INVENTION THAT MAY IN ANY WAY BE RELATED THERETO.

THIS DOCUMENT HAS BEEN PURCHASED BY THE GOVERNMENT AND MAY BE REPRODUCED AND USED IN CONNECTION WITH ANY GOVERNMENT PROCUREMENT OR MAINTENANCE OPERATION.

* FOR INFORMATION ONLY. CONTRACTOR MAY AT HIS OPTION DEVIATE FROM THESE PROCESS DETAILS.

REVISIONS			
SYM	DESCRIPTION	DATE	APPROVAL
A	(1) ADDED NEW APPL SM-D-343600	27 JAN 60	4242B-PC-59 REV'D PME
B	(1) ADDED .175 ± .010 DIM. (2) ADDED NOTE 2	22 FEB 61	4242B-PC-59 REV'D PME



NOTES:
 1. ECCENTRICITY BETWEEN DIA MARKED † SHALL NOT EXCEED .005 TIR.
 2. POSITION OF SLOTTING OPTIONAL.

CRE5, COMP. 3035 COND. B, PER SPEC. MIL-S-7720, SURFACE COND. d.
 FINISH: E300 PER SPEC. MIL-F-14072.
 * COLLINS 588 0025 00.

COLLINS PART NO.	ITEM	QTY	PART NO.	DESCRIPTION	MATL.	MATL. SPEC.
LIST OF MATERIAL						
COLLINS PART NO. <u>558 0244 002</u>						

DRAWN JENNETT			CHECKED <i>[Signature]</i>		APPROVED		COLLINS RADIO CO. OSCAR BARRIS, MGR. 1421A-PH 51-93 SIGNAL CORPS		HUB-DIAL		DEPARTMENT OF THE ARMY SIGNAL CORPS ENGINEERING LABORATORIES FORT MONMOUTH NEW JERSEY					
UNLESS OTHERWISE SPECIFIED: DECIMAL DIMENSIONS INCLUDING HOLE SIZES MAY VARY ±.005 FRACTIONAL DIMENSIONS INCLUDING HOLE SIZES MAY VARY ±1/64 MACHINED ANGLES MAY VARY ±.1° SHEARED ANGLES MAY VARY ±.25° BROKEN ANGLES MAY VARY ±1° ECCENTRICITY BETWEEN ANY DIAMETERS ON THE SAME CENTERLINE SHALL NOT EXCEED .010 TOTAL INDICATOR READING. ALL DIMENSIONS ARE FINISH DIMENSIONS INCLUDING APPLIED FINISH AND ARE GIVEN IN INCHES.			REVIEWED PME		APPROVED HLY PME		DATE 14 DEC 55						SCALE 2/1		SM-B-248895	
APPLICATION			SM-D-343600		SM-D-248975		SC-DL-248975									
COLLINS NO. QTY NEXT ASSY USED ON			558-0324004		1											

PD-794-074-2871-10-A476-28947

WHEN REFERRING TO THIS DRAWING STATE DRAWING NO., APPLICABLE ISSUE SYMBOL, IF ANY, AND DATE